

Spanish Creek Watershed Management Plan Update – September 8, 2020

The September 8th meeting of Spanish Creek Watershed Management Plan was postponed until the next regularly scheduled meeting on October 13th. The reasons were threefold 1) EPD's recent revision to the 303(d) list of impaired waters, 2) summer sampling is still ongoing, and 3) poor response on public survey.

1) EPA recently approved EPD's revisions to the 303(d) List of Impaired Waters (see figure 1).

- New reaches with fecal coliform impairments (circled in blue)
 - Long Branch from headwaters to Spanish Creek
 - Clay Branch from headwaters to Spanish Creek
- New reaches with pending assessment for DO (pending because DO baseline for blackwater creeks is still pending) (circled in blue and green)
 - Hatcher's Branch
 - Long Branch
- The main stem of Spanish Creek remained unchanged (circled in purple).
 - The portion upstream of Long Branch is pending assessment for DO
 - The portion downstream of Long Branch to the St. Marys River is impaired for Fecal Coliform and Dissolved Oxygen.
- The new EPD 303(d)/305(b) List of Waters document also says there will be a new TMDL by 2021.

2) The committee sampled following a period of wet weather on August 18th, and there was also a rain event on the day of sampling. Two new sites were added on Gibson Post Road that had very high bacteria (E. coli) counts, so the high school is going to try and source trace a few other areas upstream in the final September sampling event. GMC recommended that it would be best to have all the sampling complete before presenting to the Stakeholder committee and discussing management measures.

3) Lastly, we did not have great response rates for the public survey – only 15 people. The plan is to keep it open for September and try to make another push for more responses to get a more statistically significant sample size. If you haven't already, please complete the survey at the link below:

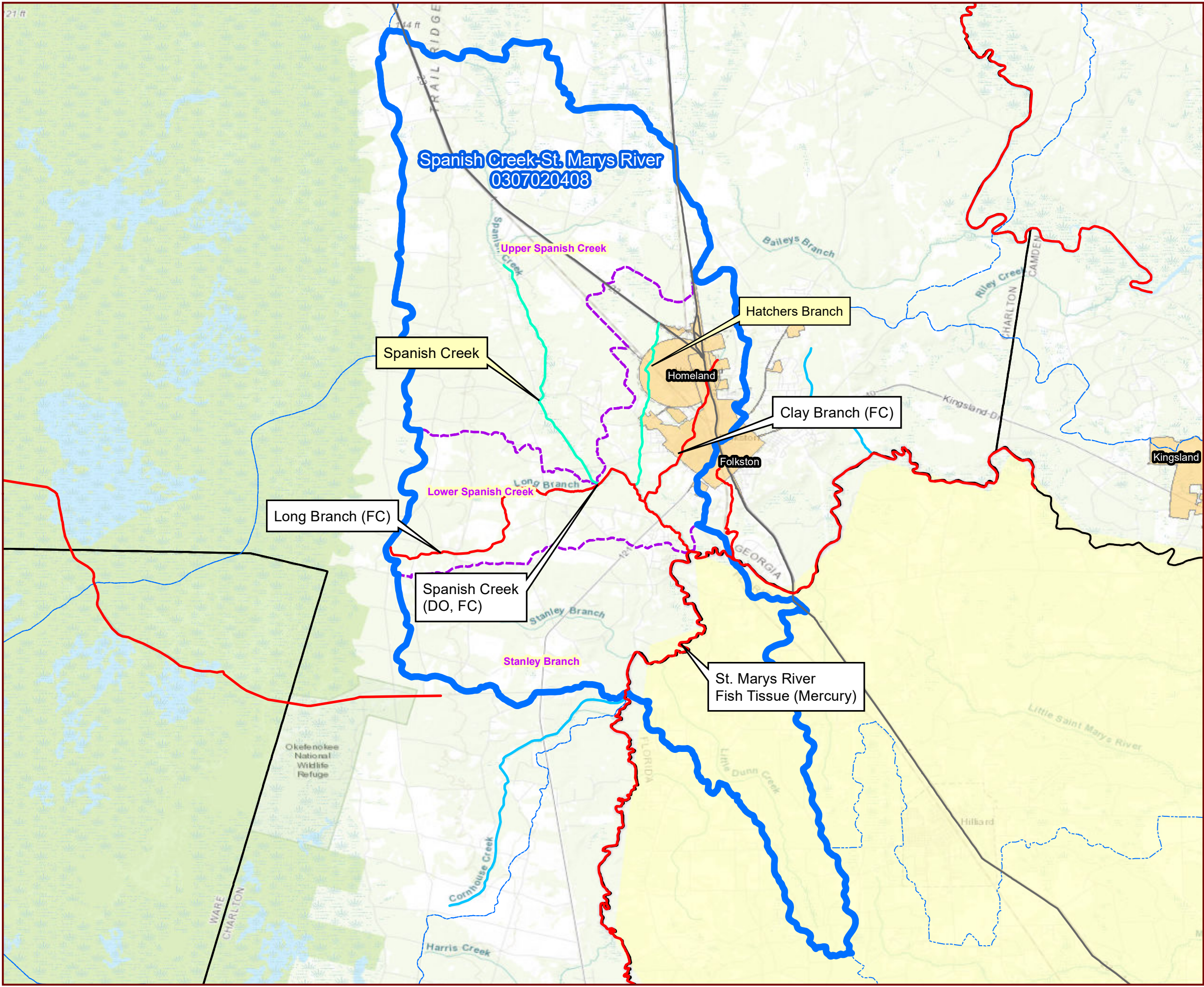
- www.gmcgis.com/spanishcreek

Other Updates:

With the new list of stream impairments and description for a planned TMDL, GMC needs to investigate EPD's TMDL plans to be sure they dovetail with the Spanish Creek WMP. Some good news is that all the new impairments are within the same HUC-12 Watershed (which is called the "Lower Spanish Creek" watershed) so no major overhaul is needed for the WMP. Several tables and maps must be updated but the overall approach to the management measures section which has not been written (or even discussed) will remain the same. With additional impaired segments, it might even offer more flexibility to expand the extents of where we can recommend and include BMPs.

GMC has drafted a large section of the Watershed Management Plan (WMP) this summer (e.g., stream impairment background, watershed characterization, analysis of previous sampling results, source assessment, and comparison to other local/regional plans).

GMC expressed that we are still on track to finish the draft plan by November, present it to the Committee in December for our 6th and final required committee meeting, and have the plan completed by the end of the year. This would leave presentations to Councils/Commissions/Committees in January to close out the remaining grant deliverables. The county would also still be in good shape for the EPD 319(h) grant application period which closes in late April.



Spanish Creek - St Marys River Watershed

Legend

- Interstates
- Major Roads
- Spanish Creek Watershed
- HUC 10 Watersheds
- HUC 12 (Spanish Creek)
- Cities
- 303(d) Listed Waterways**
- Assessment Pending
- Not Supporting
- Supporting

